



106m2 Massive Renovated Apartment

Included in Body Corporate fees are gas & electricity - \$1,283.66 per quarter

At over 106m2 this renovated apartment creates a stir with all lucky enough to view it. In modern apartments it's rare to find individuality yet this unit manages to scream "unique" to everyone.

Armed with a huge master suite with a wardrobe, renovated ensuite with double shower heads and room for a study area, this stunning apartment also features a rear balcony with a leafy outlook.

Foodies will find an enormous kitchen complete with an impressive commercial grade free standing stove, stainless steel bench tops and an abundance of cupboard space.

Situated seven kilometres from the central business district, this unit's within walking distance to local shops, public transport, Clayfield College and just a short drive to Brisbane's airport.

In a precinct sure to experience further growth over time, as well as being in a history-r

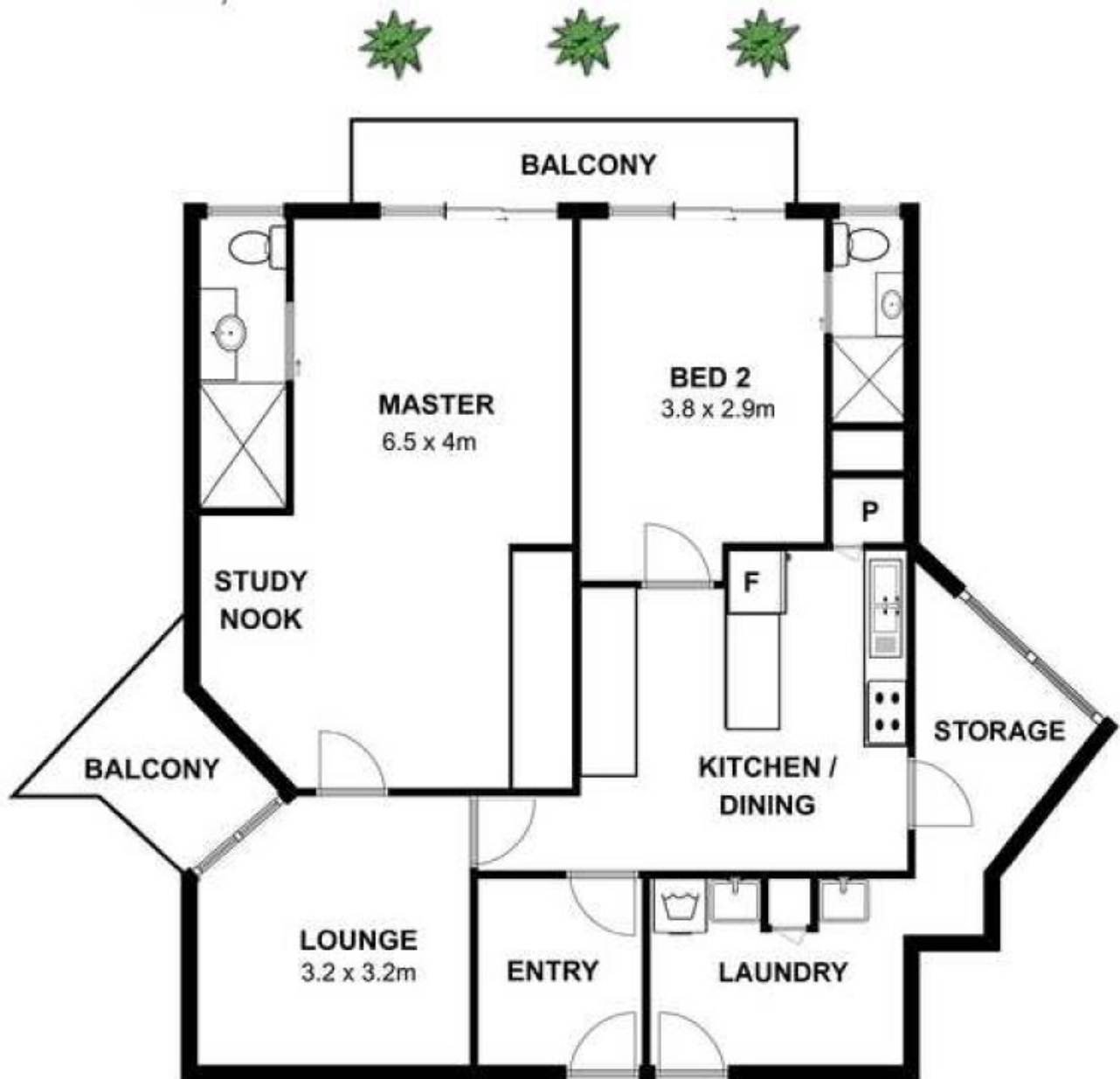
Price:

Offers over \$349,000



Darrin Leung

0404 903 299



8/592 SANDGATE RD, CLAYFIELD



INT: 95 sqm
EXT: 11 sqm
TOTAL: 106 sqm

Floor Plan measurements are approximate and for illustrative purposes only.
Floor plan created by **RPM**
Rolley Photo Media