



2



2



1

## Views, Location, Soaring Ceilings. Be Quick!

Facing east on the top floor of this Tenerife apartment complex is a wonderful two bedroom property. Exemplifying first-class open-plan living, this apartment has a renowned Woolstore feel which is the result of tall, soaring ceilings and the ability to maintain privacy at all times due to the leafy bushland in the backdrop.

### Apartment features:

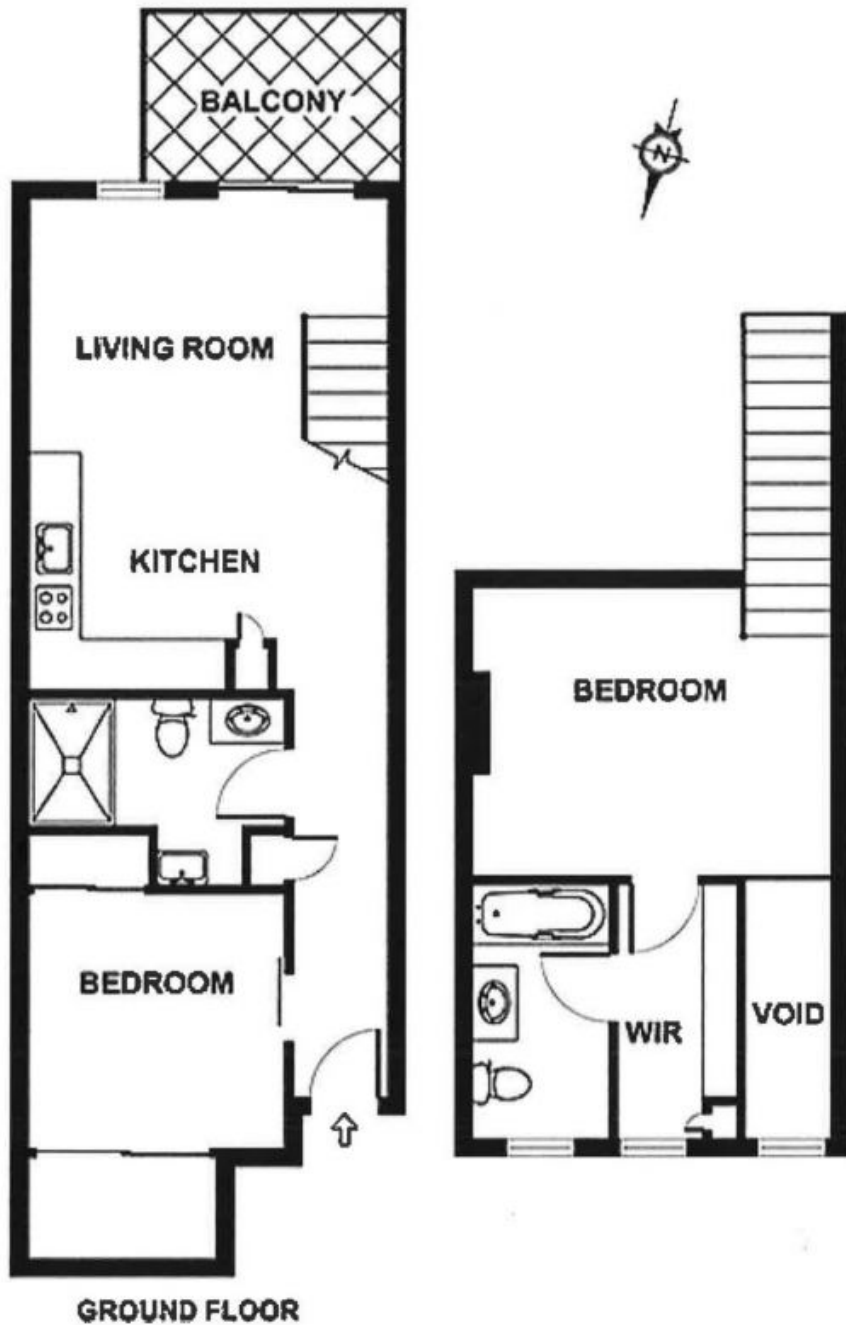
- Body Corp fees \$3416 per year with over \$800,000 in sinking fund ATM.
- Council Rates \$1252 per year
- Rent \$500 per week
- Internal unit size 91 sqm
- External unit 10 sqm + car park
- Low body corporate, no lifts
- New Carpets and partially renovated interior
- Top floor living with soaring raked ceilings
- Two big bedrooms and two bathrooms - one on each level.
- Loft-style master with walk-through robe and ensuite with bathtub.
- Second bedroom with large built-in robe and separate, private balcony.
- Air conditioning .
- Exposed metal beams and plywood ceilings add raw appeal.

**Price:** \$500,000



**Robert Lamprecht**

0419 999 989



**139 COMMERCIAL ROAD, TENERIFFE**

Whilst every attempt has been made to ensure the accuracy of the floorplan contained here, measurements of doors, windows and rooms are approximate and no responsibility is taken for any error omission or mis-statement. These plans are for representation purposes only and should be used as such by any prospective purchaser. The services, systems and appliances listed in this specification have not been tested and no guarantee as to their operating ability or their efficiency can be given.

Created by Propshoot  
[propshoot.com.au](http://propshoot.com.au)