



## Rare Corner Apartment, Soaring Ceilings, Woolsheds Feel.

**Price:** \$485,000

Don't miss this opportunity to own this beautiful, two bedroom apartment in the heart of where it is all happening..

This 89sqm apartment is brilliantly presented, perfectly located and extremely liveable. Exemplifying first-class open-plan living, this breezy apartment has a renowned Woolstore feel with soaring tall raked ceilings and boasts features such as; split level living, polished wooden floors, air conditioning, stainless steel gourmet bench tops and splash-backs, European appliances, spacious bedrooms and a larger than normal balcony.

The Cannery apartments have a unique and innovative architectural design and the complex is renowned as residential leaders in the Teneriffe area. To complement the apartment there are a range of features such as a lap and plunge pool, gymnasium, security intercom, landscaped gardens and excellent onsite management.

Apartment features:

- Body Corp fees \$3416 per year with over \$800,000 in sinking fund ATM.



**Robert Lamprecht**

0419 999 989

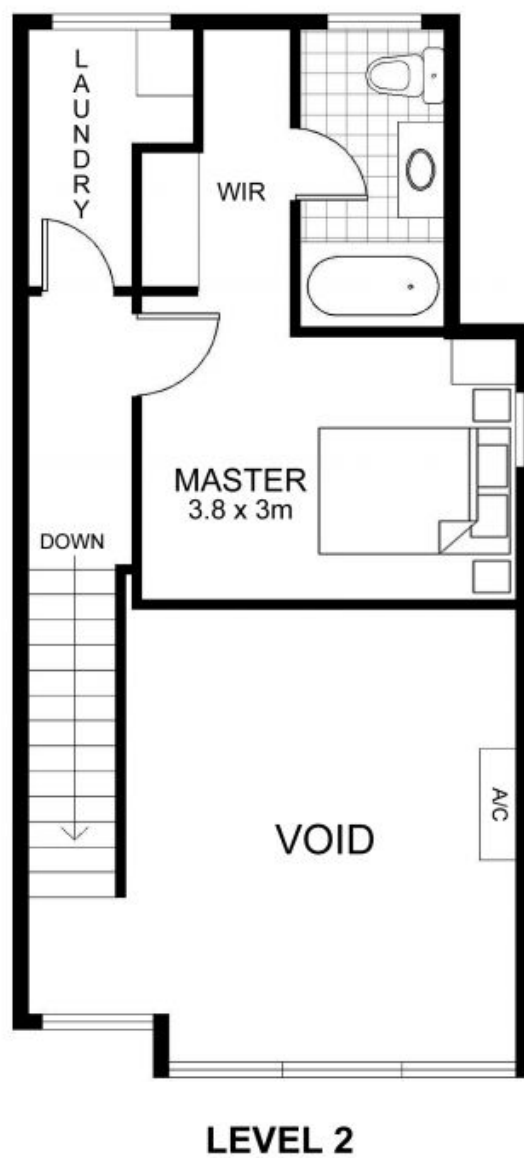
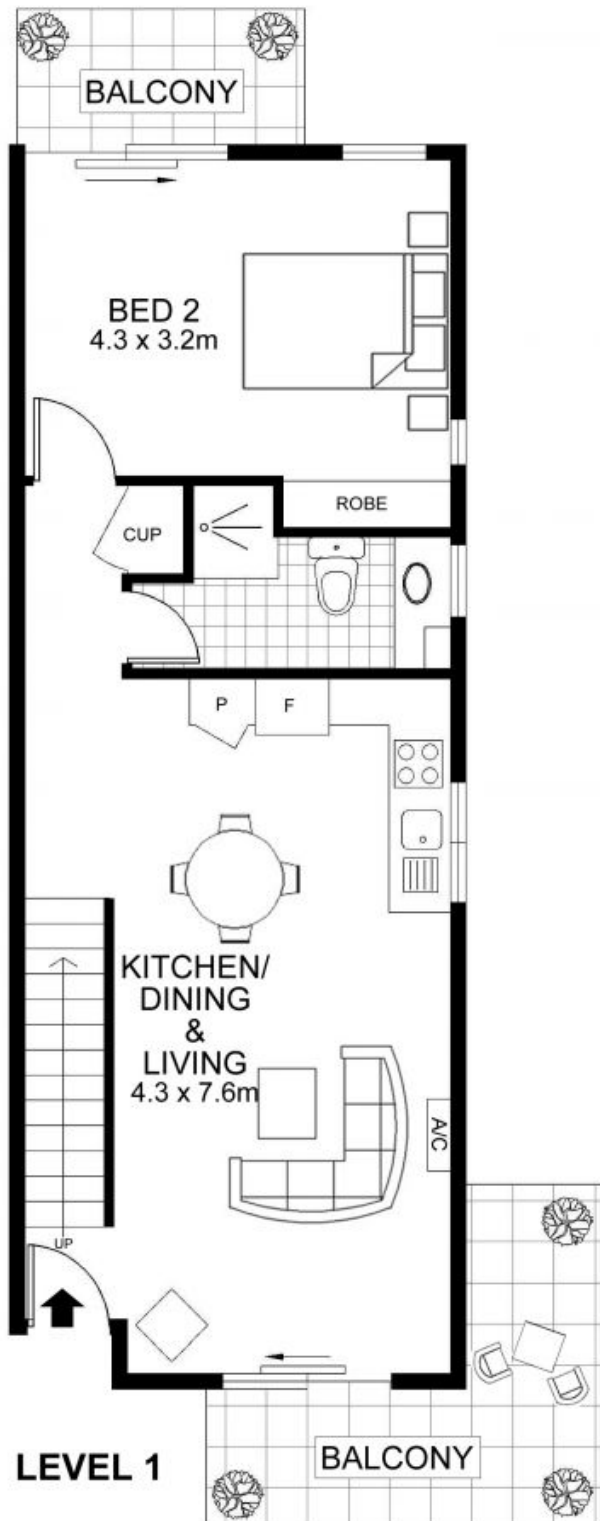


Robert Lamprecht

Real Estate Agent

[robert@newsteadrealty.com.au](mailto:robert@newsteadrealty.com.au)

Mobile: 0419 999 989



Scale in metres. Floor Plan measurements and dimensions are approximate and are for illustrative purposes only. We give no guarantee, warranty or representation as to the accuracy and completeness of the floor plan. We recommend that you instruct your own surveyor to carry out an independent investigation of the property prior to relying on the accuracy