



4



2



2

## Contact Robert regarding Property Viewings.

South of Brisbane's central business district arrives this charming home perfect for families and first-home buyers alike. Surrounded by lush flora and fauna on a spacious 558sqm land block, this elegant home opens up to four bedrooms, two bathrooms, an electric garage with two car parks and notable amenities. These include floor to ceiling mirrors in bedrooms, tiled living areas, a modern kitchen with many cupboards, ceiling fans, a large outdoor patio perfect for entertaining guests, one outdoor storage shed and a solar hot water system.

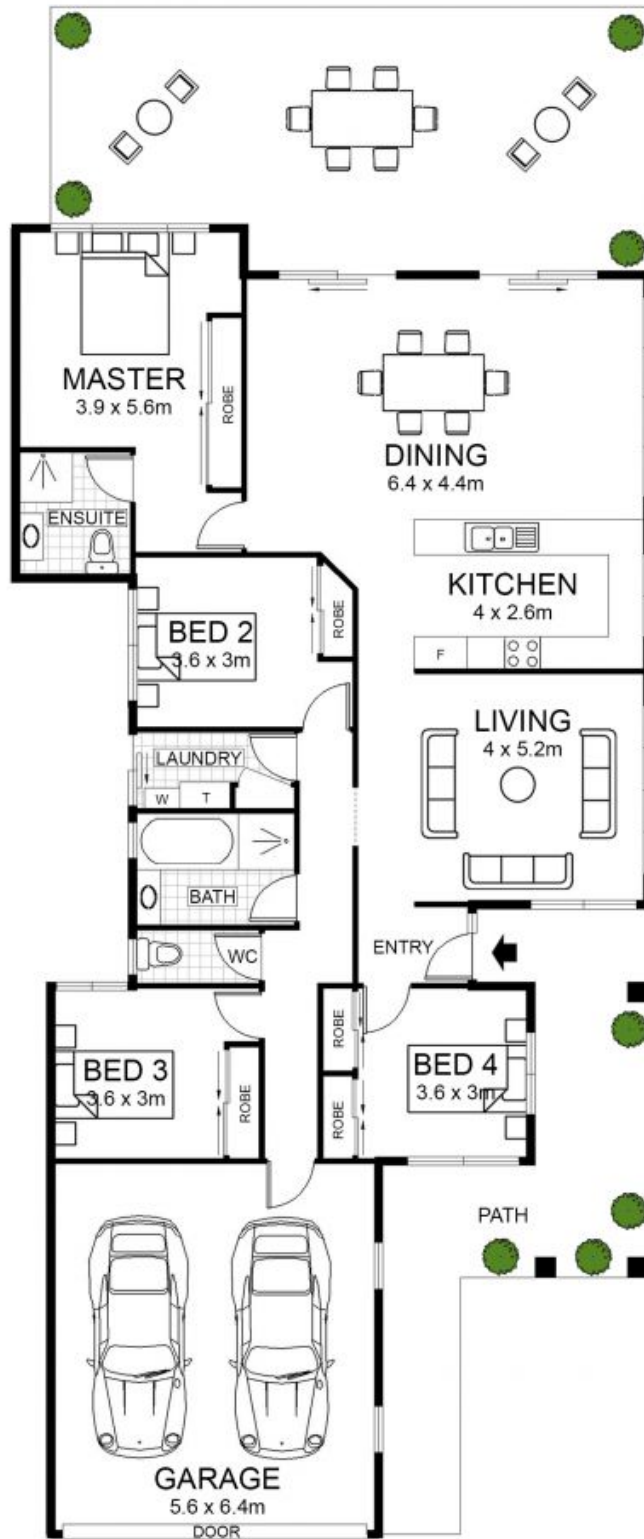
- Located in the Stretton School catchment
- Four bedrooms, two bathrooms and two car parks.
- Situated on a 558sqm block of land.
- Located on a quiet suburban street in a peaceful part of south-east Queensland
- Nearby shopping complexes and public transport options.
- Features amenities including a tiled living areas, modern kitchen facilities, ceiling fans, a large outdoor patio.

Named after Henry Parkinson, a famed local railway engineer, it's easy to navigate across town from this suburb. Nearby this listing can be found Logan Motorway, Mount Lindesay Hig



**Robert Lamprecht**

0419 999 989



Floor plan measurements are approximate and for illustrative purposes only. Scale in meters.  
 Floor plan created by Rolley Photo Media. [www.rolleyphotomedia.com.au](http://www.rolleyphotomedia.com.au)

INTERNAL : 141 m<sup>2</sup>  
 GARAGE : 36 m<sup>2</sup>  
 EXTERNAL : 67 m<sup>2</sup>  
**TOTAL AREA : 244 m<sup>2</sup>**



## 14 Budawang St, Parkinson