

## Large Living, City Views, Brilliant Location!

This beautifully modern two bedroom two bathroom apartment located in the 'SL8' building is designed by an award winning architect & is in the heart of one of Brisbane's most vibrant districts.

Suitable for couples, friends & small families, this property hosts two large bedrooms, an ensuite & main bathroom. Built in robes, air conditioning, internal laundry & a large balcony for entertaining family & friends.

A fully appointed kitchen features a large fridge space, stainless steel appliances, dishwasher & stone bench tops. This flows through to the well sized lounge and is a light filled, neutral space.

Enjoy glimpses of Brisbane City & take advantage of being a short stroll from the ferry, bikeways & boutique stores. West End is full of trendy bars, popular restaurants & hosts the famous Davies Park markets.

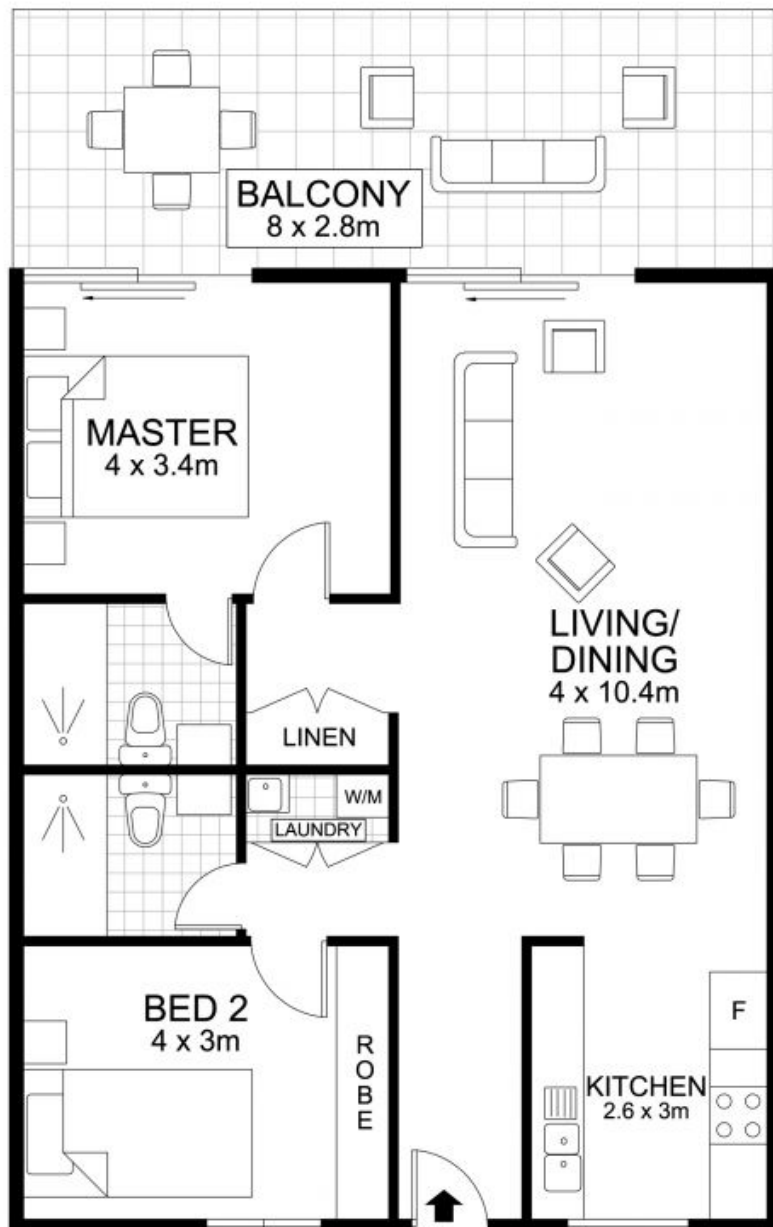
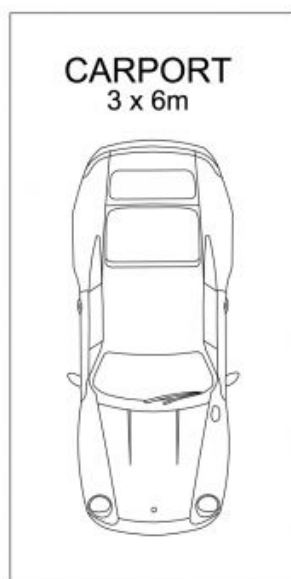
Features include:

- over \$1,170,000 in the sinking fund.
- Body Corp around \$5190 per year
- Rental \$470pw



**Robert Lamprecht**

0419 999 989



Floor plan measurements are approximate and for illustrative purposes only. Scale in metres.  
Floor plan created by Rolley Photo Media. All rights reserved, Copyright 2016

INTERNAL : 82 m<sup>2</sup>  
CARPORT : 18 m<sup>2</sup>  
EXTERNAL : 19 m<sup>2</sup>  
**TOTAL AREA : 119 m<sup>2</sup>**



26/8 Musgrave Street, West End

