



4



2



2

Kings Park Estate ? Huge Lowset Family Home, Summer Ready

Open inspection Cancelled - Please call for private showing

Located on a quiet street in the desirable Kings Park Estate, this huge family home set on 721m2 has all the features that you are looking for and won't last long!

At the heart of the home and positioned perfectly to service both internal and outdoor living areas, the striking open plan kitchen is sure to be a delight for the chef and entertainer alike boasting a selection of modern appliances, including dishwasher, and generous cupboard space.

Built for Queensland lifestyle, the home also features a large covered patio overlooking the inviting pool. The perfect spot for year-round entertaining, outdoor dining or to just relax and unwind.

Astute buyers will notice:

- ? Solid brick and tile home, with 4 generous bedrooms
- ? Steel frame with insulated roof and walls

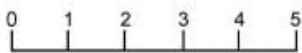
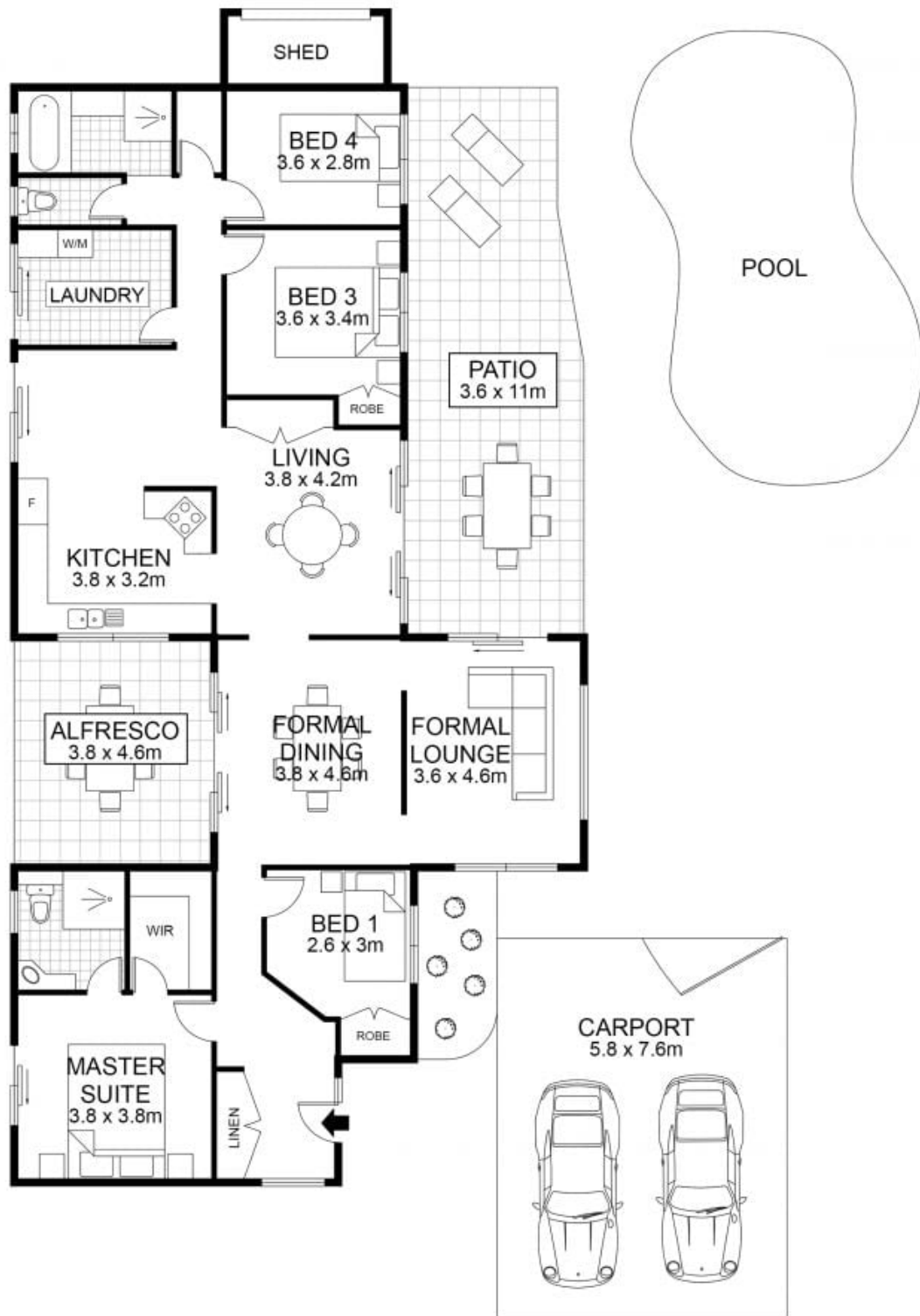


Robert Lamprecht

0419 999 989

Price:

Low to Mid \$600,000's



Floor plan measurements are approximate and for illustrative purposes only. Scale in metres.
 Floor plan created by Rolley Photo Media. All rights reserved, Copyright 2016

INTERNAL : 172m²
 CARPORT : 44m²
 EXTERNAL : 47m²
TOTAL AREA : 263m²



62 Balvenie Street, Keperra

