

## Huge 162m2 Unit - 2 Car spaces - Pool

Unwind and relax with this sunning unit in the most perfect location.

The modern, renovated kitchen sits at the heart of the space, superbly appointed with an abundance of bench space and an array of premium appliances sure to inspire gourmet delights.

Enjoy a large open plan layout that flows out to the massive outdoor alfresco area with an Eastern aspect. There is plenty of room for outdoor settings, bbq and sun lounges.

Within the complex there is a pool ready to enjoy all summer long and is complemented by landscaped gardens and secure entry for peace of mind.

Newstead is a vibrant, inner city precinct well known for its designer boutiques and award winning caf?s and restaurants. In addition to the local options on offer there is also the convenience of public transport (including CityCat and CityGlider), bikeways and riverside walkways.

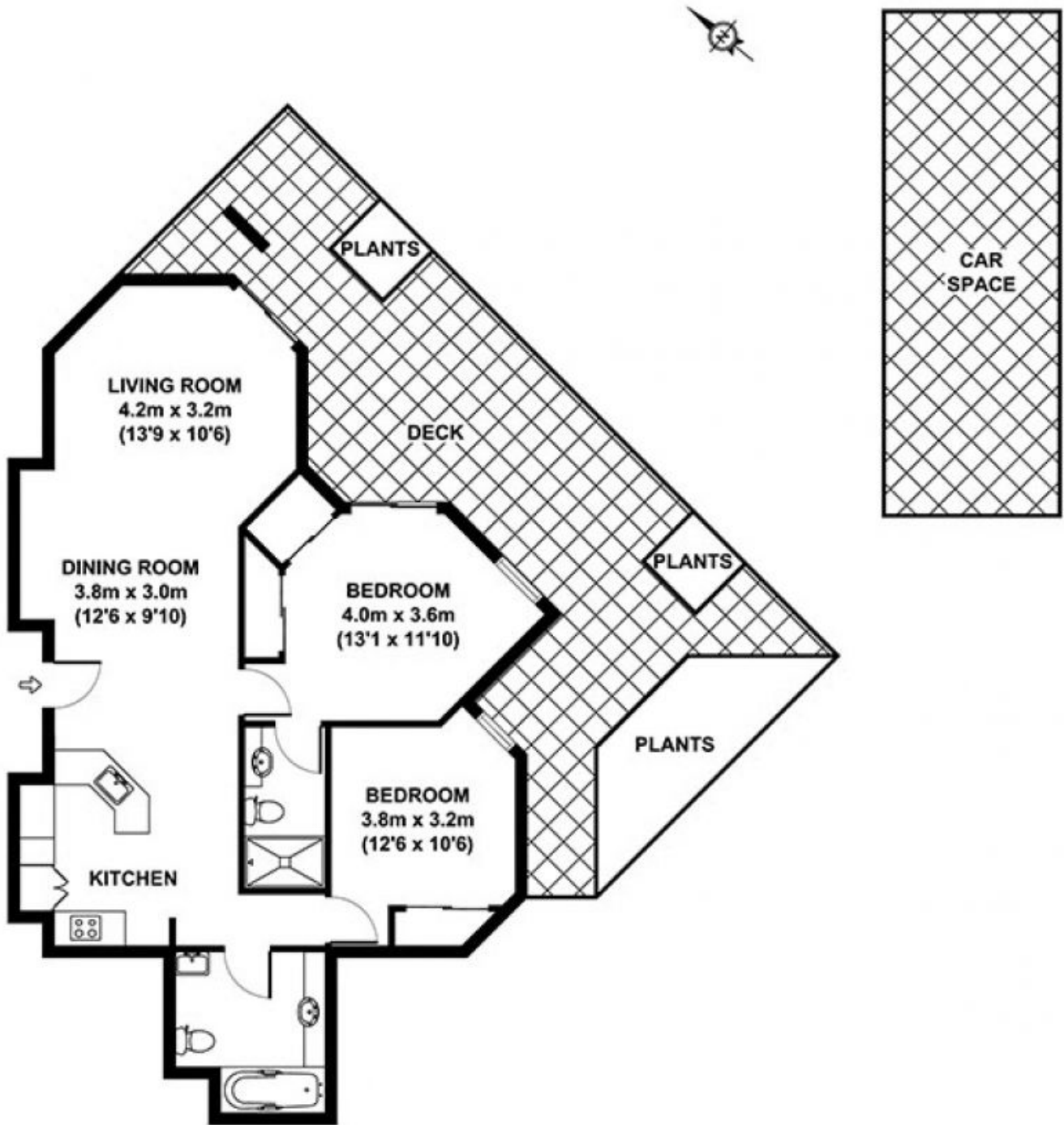
Features include:

**Price:** \$550 per week



**Darrin Leung**

0404 903 299



**3-15 NEWSTEAD AVENUE, NEWSTEAD**

**APPROX. GROSS INTERNAL FLOOR AREA 83 SQ M / 893 SQ FT  
 APPROX. GROSS TOTAL FLOOR AREA 162 SQ M / 1744 SQ FT**

Whilst every attempt has been made to ensure the accuracy of the floorplan contained here, measurements of doors, windows and rooms are approximate and no responsibility is taken for any error omission or mis-statement. These plans are for representation purposes only and should be used as such by any prospective purchaser. The services, systems and appliances listed in this specification have not been tested and no guarantee as to their operating ability or their efficiency can be given.

Created by Propshoot  
[propshoot.com.au](http://propshoot.com.au)