



A RENOVATOR'S DELIGHT SECONDS FROM SCHOOL.

Located in Acacia Ridge in Brisbane's south side, arrives this quaint three bedroom, one bathroom and four car park home. Upon entry to the lowset brick property, the future homeowner will be greeted by a charming yard which flows wonderfully inside to reveal timber flooring in the living room, carpeted bedrooms, an internal laundry, stainless steel kitchen appliances and ample storage. Set upon a cosy 617sqm parcel of land in one of south-east Queensland's emerging suburbs, this home is undoubtedly a renovator's delight.

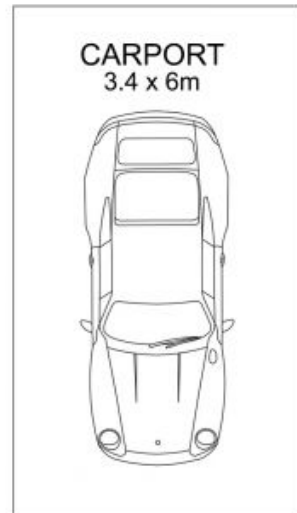
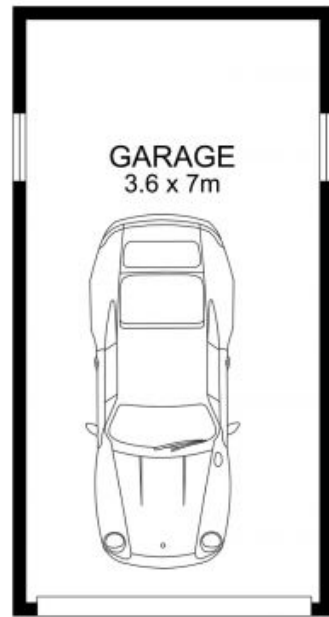
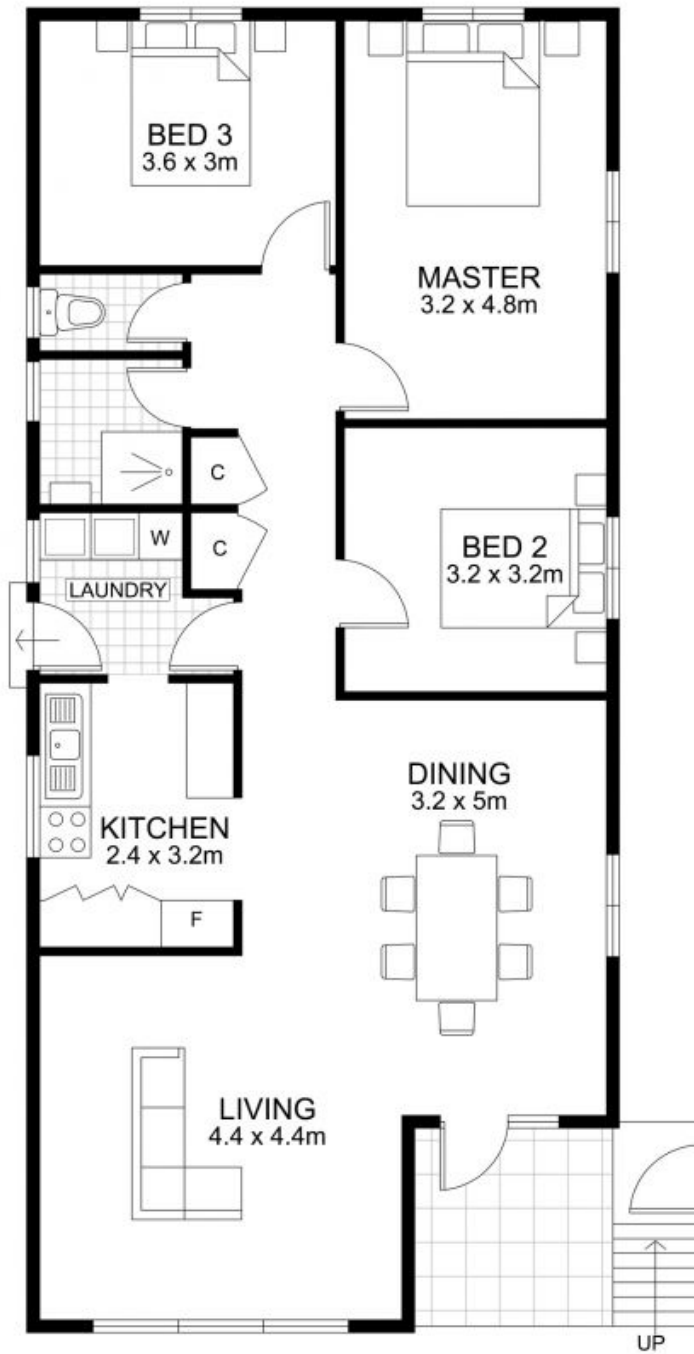
Named after the large amount of acacia flowers in the area, Acacia Ridge is just 15 kilometres from Brisbane's central business district. Growing in popularity amongst investors in Queensland capital, the multicultural neighbourhood is home to several renowned primary and secondary schools which are within walking distance of this home. Also within the suburb can be found one of Queensland's largest railway yards as well as the Iceworld, one of Brisbane's few remaining ice skating rinks. To express your interest in this wonderful investment opportunity, call Robert Lamprecht on 0419 999 989.

Price: Contact Agent
Council Rates: \$400.00 p/q



Robert Lamprecht

0419 999 989



Floor plan measurements are approximate and for illustrative purposes only. Scale in metres.
Floor plan created by Rolley Photo Media. www.rolleyphotomedia.com.au



90 Edlerwood Street, Acacia Ridge