



2



2



1

Resort-Style Living in Newstead: Spacious Apartment with Tropical Vibes

Welcome to "The Bond Store," a serene oasis nestled in one of Newstead's most peaceful, tree-lined streets. This stunning two-bedroom, two-bathroom apartment offers the perfect blend of modern comfort and tranquil living, all within a lush tropical setting.

Step into the bright, open-plan living, dining, and kitchen area, where natural light floods the space, highlighting the beautiful new floorboard flooring that adds a touch of elegance and warmth. Sliding glass doors lead to an oversized, covered balcony—your ideal spot for relaxing with a morning coffee or hosting friends and family in the fresh air.

The spacious master bedroom offers a private retreat, complete with an ensuite, built-in robe, and direct access to a charming Juliette balcony. The second bedroom is equally generous, featuring built-in robes and easy access to the well-appointed main bathroom with an internal laundry for added convenience.

Features you'll love:

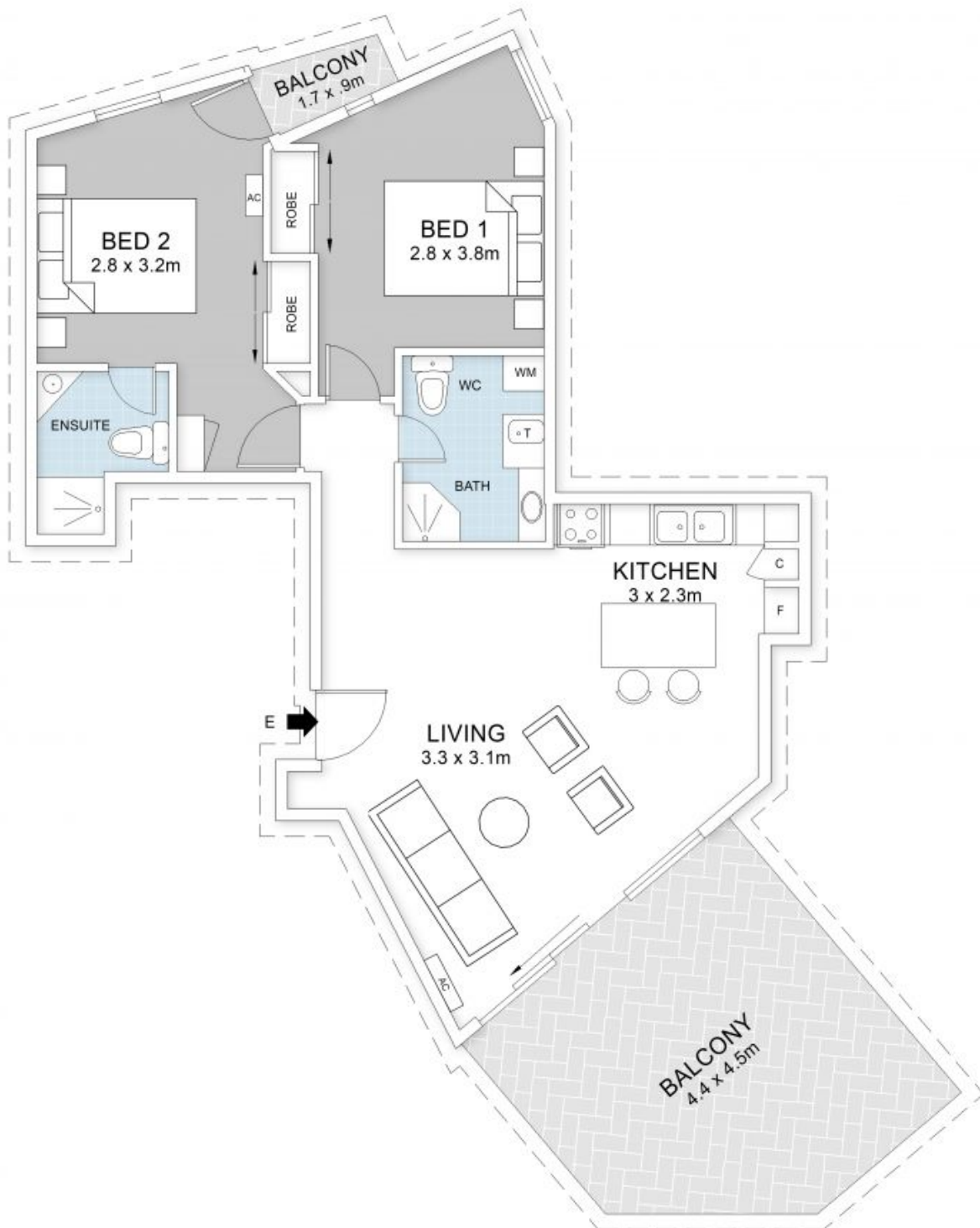


Sherie Jafari

0493 435 713

Dana Lim

0420 718 079



37/32 Newstead Terrace, Newstead

Internal 68m² | Garage 19m² | External 19m² | Total 114m²



The following floor plan is provided for informational purposes only and does not constitute a legally binding representation of the property. This floor plan is a visual illustration and approximation of the layout and dimensions of the property as observed at the time of creation. All measurements are from the inside of the wall to opposite wall. Bedroom measurements are taken from the back of the cupboard to wall.

Floor Plan crafted with care by Rolley PHOTO MEDIA